

ABOUT **THE WORLD DIABETES FOUNDATION**



- Founded in **2002**
- Initiated by a grant from Novo Nordisk A/S of **DKK 1.75 billion / USD 326.2 million**
- Registered in Denmark as an independent trust.
- Seven board members – majority external of Novo Nordisk.
- Chairman: Professor Pierre Lefèbvre (Former President of IDF).
- **336** projects funded to date in **108** countries / **15** projects based on fundraising.

PARTNERS **ON GLOBAL, REGIONAL AND LOCAL LEVELS**



- Danish Development Assistance
- International Diabetes Federation
- The World Health Organization and its regional offices
- World Bank HQ
- United Nations Office for Partnerships
- Pan American Health Organization
- Ministries of Health and NGOs
- Local Diabetes Associations
- Global Alliance on Women's Health
- Other NCD agencies (IUTLD)

KEY DIABETES FOCUS AREAS



THE DIABETIC FOOT
(prevention of amputations)



THE COMING GENERATION
– primary prevention



EYE CARE
(detection of diabetes,
prevention of blindness)



TB & DM
– prevention, capacity building
and care



CHILDREN WITH DIABETES
(prevention, education, treatment)



ACCESS TO DIABETES CARE



MOTHERS AND DIABETES
(nutrition, prevention, education)



ADVOCACY
– building a global alliance

PROJECTS



The WDF has funded **336** projects in **108** countries to date focusing on diabetes awareness, education and capacity building at local, regional and global levels.

The WDF has funded **USD 102 million** of a total portfolio of **USD 307 million**

4.6 million people in developing countries will potentially be influenced.

SCREENING/AWARENESS CAMPS



27.577
Awareness/screening
camps organised

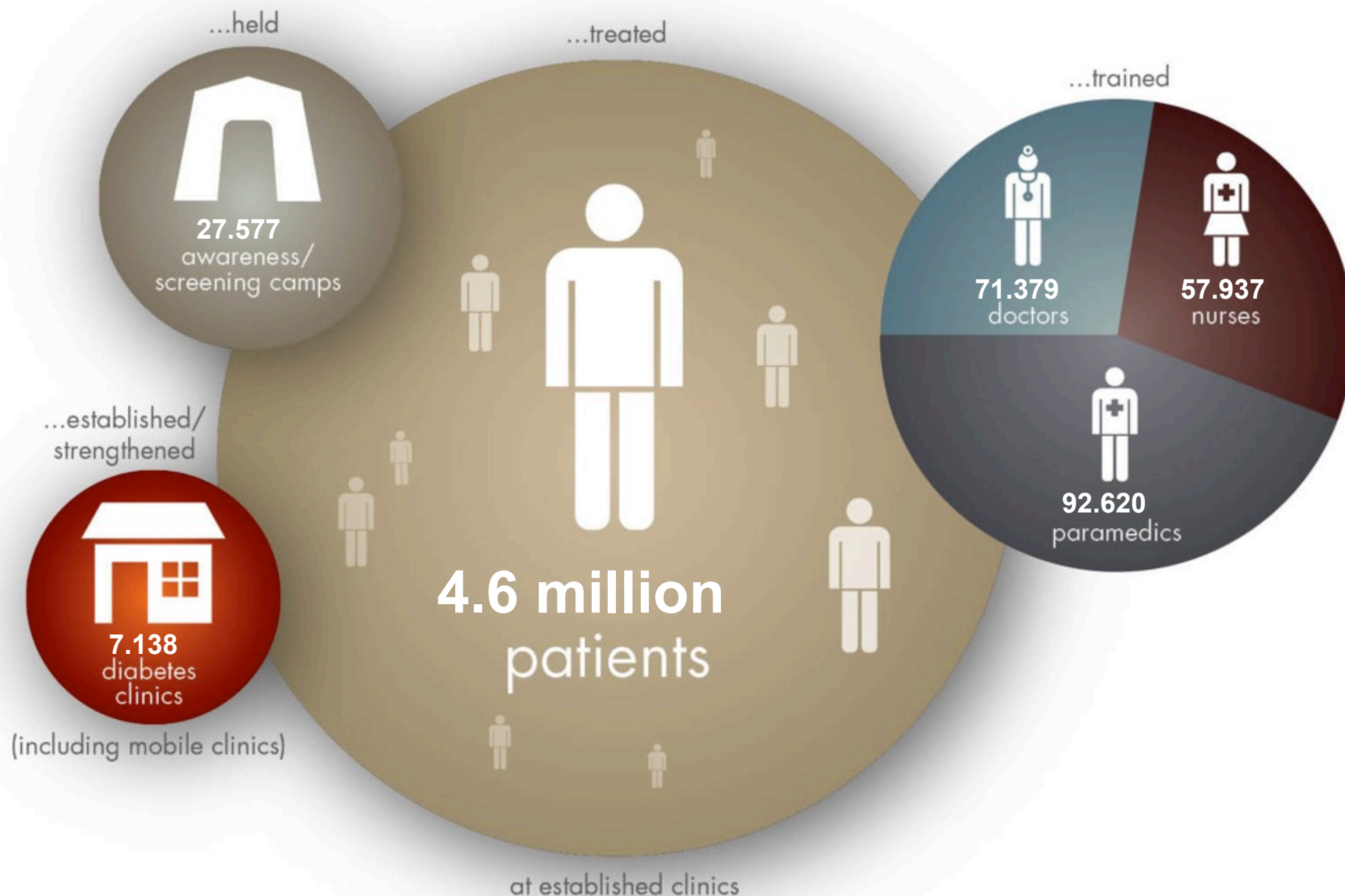


47.5 million
People participated
in camps



7.1 million
People screened
for diabetes

IN THE DECADE THAT THE WORLD DIABETES FOUNDATION HAS BEEN OPERATING, IT HAS SUPPORTED PROJECTS WHICH HAVE...



CODE OF CONDUCT

Our aim is to alleviate human suffering related to diabetes and its complications among those least able to withstand the burden of the disease.

1. We will recognise people with diabetes and related diseases as dignified humans in all our activities and communications.
2. We will display respect for the culture and values of the communities and countries within which we work.
3. We will facilitate the UN Millennium Development Goals by striving to reduce the beneficiaries' vulnerability – addressing basic needs but also promoting development of sustainable solutions.
4. We will give support regardless of race, gender or creed of the recipients in the developing world based upon assessment of needs and capabilities to meet these needs.
5. We will promote local ownership of sustainable initiatives in co-operation with governments, private institutions and civil society.
6. We will help build and strengthen local capacity to ensure that the recipients are empowered as key players in the development process.
7. We will seek to support and create synergy between both top-down and bottom-up approaches that apply participation and partnership as both a means and a goal.
8. We will be accountable to both those we seek to assist and those from whom we accept resources.
9. We will adopt and require our partners to adopt a zero tolerance policy to corruption and bribery.
10. We will be open and transparent, and report on the impact of our work, and the factors limiting or enhancing that impact.



WORLD **DIABETES** FOUNDATION

www.worlddiabetesfoundation.org